

₹ 100 February 2017

SOCIETY

■ A MAGNA PUBLICATION
www.societyinteriors.com

INTERIORS

NEWSSTAND COPY

**STUDIOVISTARA'S
HOLISTIC & EXPERIMENTAL
DESIGNS FOR A PENTHOUSE
IN VADODARA**

**GA DESIGN'S
MODERN AND
INNOVATIVE
DESIGN
APPROACH**



PLUS

Sunil Maniramka • Krsnaa Mehta • Anju Roy
Vidhisha Nimuchwala & Yusuf Hussain

SPECIAL COVERAGE ON

THE ECONOMIC TIMES
presents

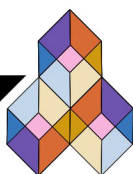
ace[™]

ARCHITECTURE CONSTRUCTION ENGINEERING

TECH

2018

THE FUTURE OF BUILDING



Artistic

INNOVATION

RAJAN AND SACHIN GOREGAOKER OF GA DESIGN EXPRESS THEIR CREATIVITY THROUGH WELL-CHOREOGRAPHED ARCHITECTURE AND INTERIOR DESIGN VOCABULARY THAT TRANSCENDS BOUNDARIES AND MAKES EACH AND EVERY PROJECT A UNIQUE ONE.

Text: Marina Correa **Photographs:** Courtesy the firm



Rajan Goregaoker

Sachin Goregaoker

Ritu Goregaoker

Shami Goregaoker



Mumbai-based **GA Design** is a multi-disciplinary design practice founded in 1999, by principal architects **Rajan** and **Sachin Goregaoker**. The firm has over the years, grown into a reputed design firm appreciated for offering innovative design solutions.

After graduating from Sir. J J College of Architecture in 1990, Rajan spent his formative years working for a renowned builder in Mumbai, where he gained extensive experience and practical knowledge in designing residential and commercial buildings, townships, luxury homes and offices. Sachin closely followed his brother's footsteps after graduating from Sir J J College of Architecture in 1994, he spent his initial years working for architectural practices, and he too became fluent in building residential and commercial developments as well as designing luxury apartments and club houses.

Together, they are a dynamic duo offering a balanced design solutions that respects a project's economics, functional use of space and flexibility for future expansions. Approaching each project without preconceived ideas, they realize their clients' vision using technical expertise, imagination and dedication. Their forte lies in their passion for artistic innovation: incorporating expertise from various disciplines and brining in their own extensive knowledge and experience, thereby resulting in high-quality buildings and interiors that survive the test of time.

CONTACT DETAILS

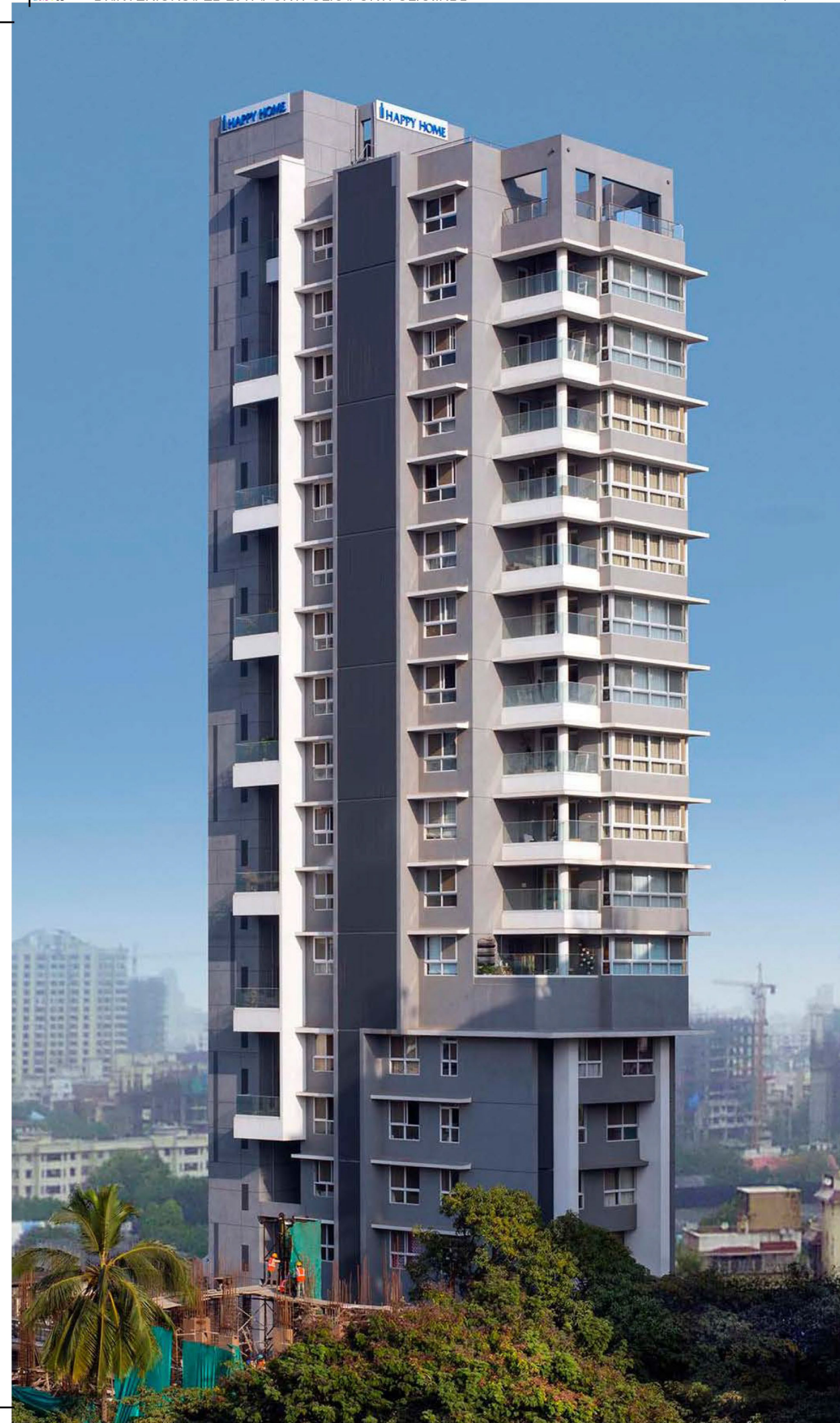
08 Adhyaru Industrial
Premises Co-op Soc Ltd.
Sunmill Compound
Lower Parel
Mumbai 400013
022-2498 0527
projects@gadesign.in

Here are some of their significant projects:

Arena Space, Jogeshwari (E)

Arena Space, is a commercial office building with a rectangular floor plates. The services are located on the south side, while the remaining three sides are adorned with complete glass façades offering uninterrupted strategic view.

The building's design is conceived like a ribbon, which originates from the ground and wraps around the building in a dynamic manner spiraling up to the terrace level. The ribbon expands and contracts on certain floors exposing the refuge decks at random intervals. The lower three floors on the west side boast of a triple height lobby. The building façade is essentially a combination of several materials like dark granite columns on the lower floors, aluminium cladding, aluminium extruded sections and high-performance glass.



Jade Ganesha, Matunga (E)

This redevelopment building project is highly efficient both in terms of floor space and aesthetics; while, including apartments overlooking the beautiful Five Gardens. "The vision was to create spaces for tenants as well as for buyers in the heart of Mumbai," says Rajan.

This IGBC Gold Certified building consists of 20 floors, which include five floors of parking, four floors of tenants and 11 floors of sale flats. Each floor has one 3BHK apartment of 1,300 sq. ft. with a corner deck, which is a distinguishing feature of the façade design. Two car lifts on the front side of the building makes for a dead façade, which has been treated aesthetically with Paradiso granite with LED light inserts.



Kalpataru Sparkle, MIG Colony, Bandra (E)

In this redevelopment project, three towers standing adjacent to each other with their elaborately designed façade provide an instant connect with the energy of the city.

The building has a prominent solid white frame and a crown that is lit at night, transforming it into a spectacular structure. From the 18th floor, the towers offer an uninterrupted view of the Bandra highway and it houses lifestyle amenities such as green spaces and parking. The fully-equipped clubhouse with its wrap-around form complements the dynamics of the building design. The recreation area is set on a landscape deck overlooking Bandra-Kurla Complex.

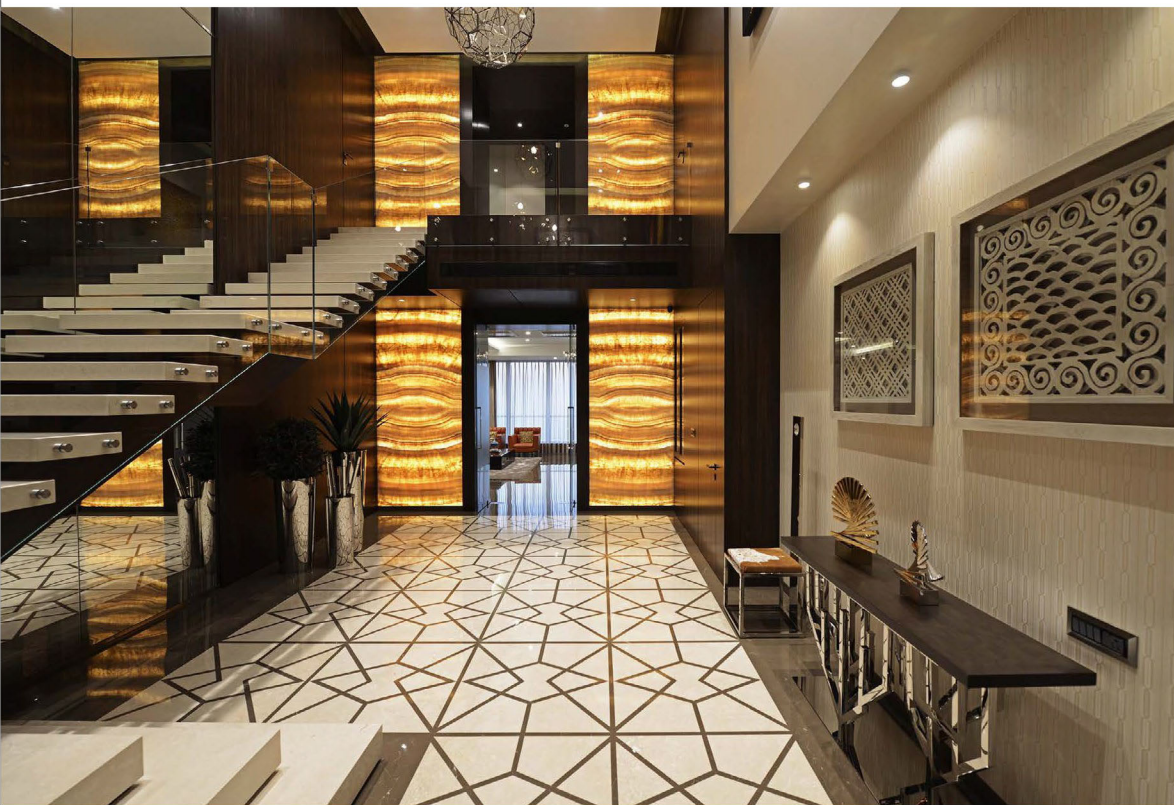
A seamlessly integrated palette of architectural elements and materials finish this modern luxury development perfectly.

Kalpataru Towers, Kandivali (E)

This complex comprises of four towers of 30 storeys with a 3-level podium. There is a magnificently detailed multilevel garden, a club house and a swimming pool on two levels. The podium has ample parking space and careful planning has gone into designing traffic circulation with comfortable ramps connecting the various podium levels.

The façade design of the building decides how iconic the structure will be. In this complex, the four towers are closely abutting each other, so there was a need for a strong separation, which would give each tower a separate identity and was achieved by creating a wall on either side of each tower, which runs across the entire height of the building and culminates in the shape of a sail. This wall is supported with white curvilinear bands, which are effect shade breakers for the rooms of the apartments. These bands are made interesting by reducing their width at the extreme end and are joined at intervals to give the effect of a soft curve.





Luxury Duplex Apartment, Nepean Sea Road, Mumbai

This sea-facing duplex apartment was designed for a family of four. The design theme was to create a plush ambience with a contemporary look and feel.

The overall colour palette was kept neutral with a range of textures achieved with the usage of varied materials and fabrics. Rich materials such as leather, marble, mirror and veneer along with practical planning of spaces cull-out the perfect blend of luxury along with practical living solutions.



Matunga Gym Restaurant

This 2,000 sq. ft. fine dine restaurant is designed for a sports and leisure club in Matunga. A warm and relaxed atmosphere wraps this modern and contemporary styled, 110-seater restaurant. Earthy tones, dynamic lighting, natural materials like wood, stone and fabric, sound-absorbing elements like wooden ceiling, acoustic ceiling sheets and decorative fabric panels ensure that overpowering sounds are eliminated, while creating an inviting atmosphere.

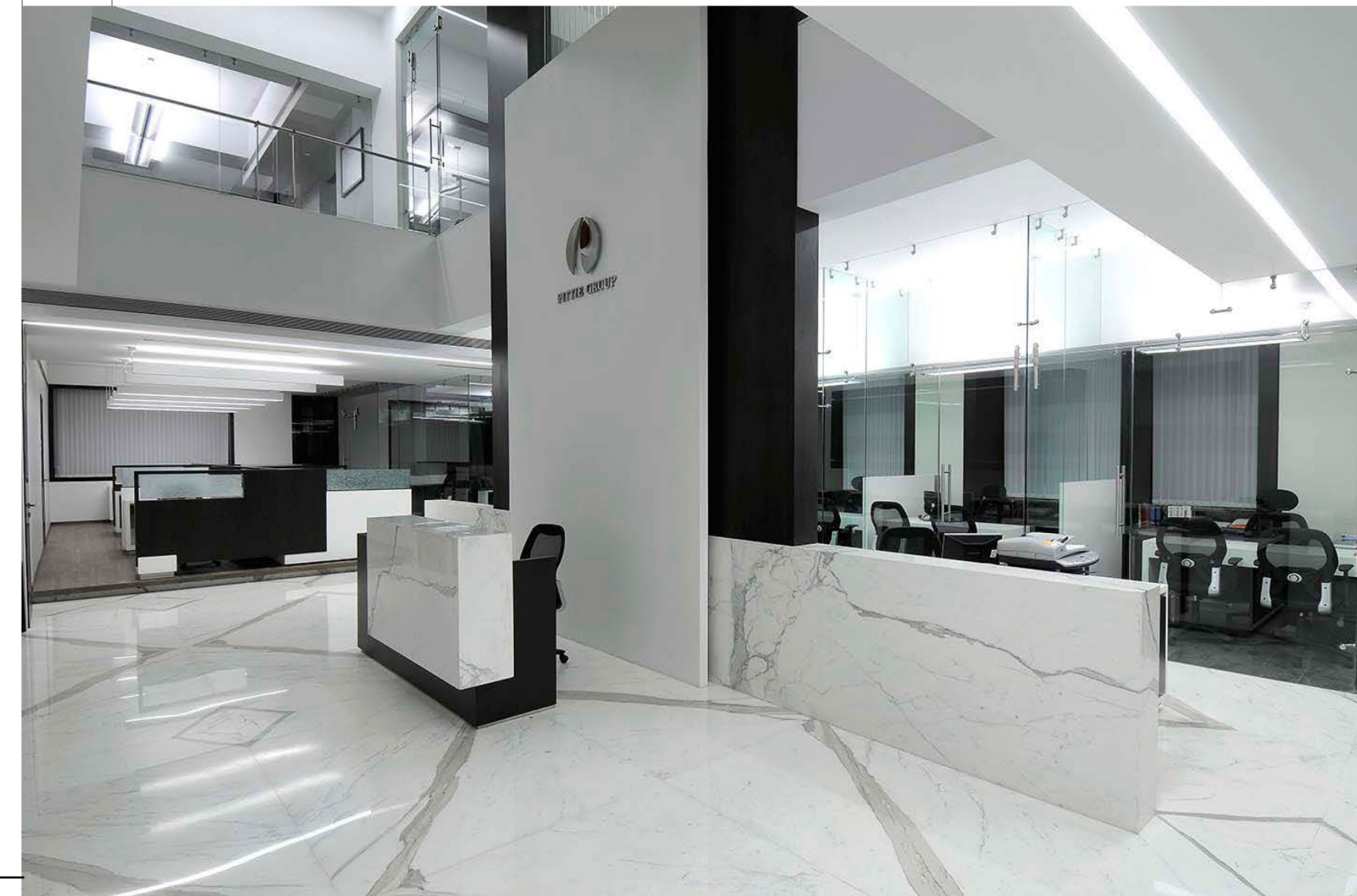
Seating for large and small groups is provided, while privacy is enhanced with the use of decorative laser-cut partitions which are not only functional but also aesthetic in design.



Commercial Office in Bandra-Kurla Complex, Mumbai:

This 15,000 sq. ft. office has been designed for a client at Bandra-Kurla Complex, in Vaibhav Chambers, the client's own building.

The colour scheme of this space is white and crisp. The top two floors of the building are for the owners, whilst the 9th floor has a huge cut-out in the centre which opens to the sky. Taking advantage of this double-height is the grand reception wall with a combination of Italian Satuario marble and Corian wall backdrop displaying the Pittie Group logo in bold steel, making it an impressive property.



Private Villa, Khandala

This visually transparent villa is designed on the lines of an Indian tropical home where the built form is oriented towards the glorious views of the valley.

The interiors have a semi-rustic feel as the materials used are consistent with the client's brief of being fungus and moisture proof. Stone is used in a variety of ways, built-in seating reduces furniture and walls have texture instead of POP to cut moisture absorption. The rustic feel, the visual transparency and the picture perfect view of the valley makes it a perfect second home for a weekend getaway.





Regency Sarvam, Thane

It is the biggest residential township in Titwala, sprawled across 68 acres. The buildings are a combination of one and two BHK apartments. The highlight of this project would be a 24-acre CRZ area with a wide-ranging array of amenities for residents of this complex.

Long winding walk ways, tennis courts, seating areas, shaded pathways, children's play areas, a skating rink are just a few of the facilities provided here. Apart from the coastal green belt all the buildings are planned around large central green spaces.



The architectural model of this project pursues a concise, fluent and a grand style. All apartments have large decks, which give the residents a feeling of openness and bring them closer to nature. The grand and clear building atmosphere combined with bright contrasting colours creates an elegant ambience.

Thus, after perusing this body of work two features stand out: a sense of uniqueness and the willingness to constantly push the envelope — certainly hallmarks of the professionals behind GA Design. ■